

FOR SALE OR LEASE

1700 Matthews Township Parkway

Features

- Well Maintained Single Story Medical Office Building
- Ample Parking
- Less than ¼ mile from Presbyterian Hospital- Matthews Campus
- X-Ray and Lab facilities currently in place
- Formerly used as an Urgent Care and Rehabilitative Facility



Location

1700 Matthews Township Parkway
Matthews, North Carolina 28105

Terms and conditions

Sale Price \$1,300,000
Total Bldg. Square Footage 8,874 SF

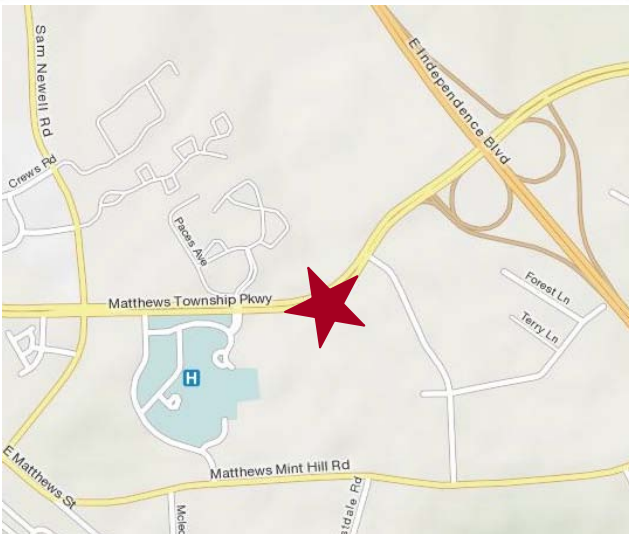
Rental Rate \$14.00 NNN
Square Feet Available 8,874 SF

For more information contact

Ben Vandiver

704.714.7687

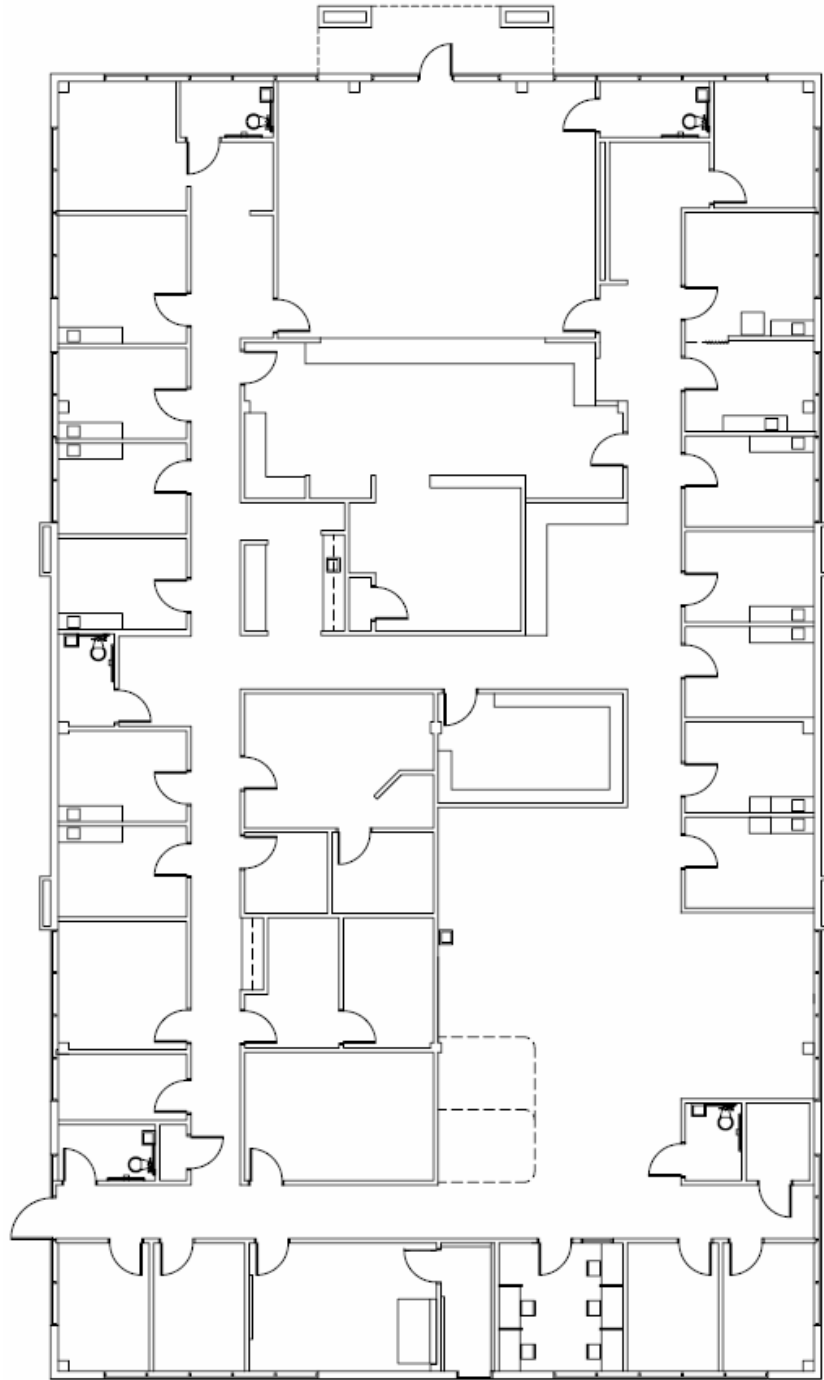
bvandiver@lincolnharris.com



A Promise of Value.

lincolnharris.com

Existing Floorplan



A Promise of Value.

lincolnharris.com