

SEVENTH STREET STATION

FOR LEASE

Location

225 East 6th Street
Charlotte, North Carolina

Property highlights

- 13,589 square feet available

This unique retail opportunity is located in the heart of uptown Charlotte and is well positioned along the light rail line. This site is positioned between 6th and 7th street along the LYNX Blue Line. On the ground floor of a 1600 space parking deck, this is a convenient location and has been the home of Reid's Grocery since 1998.

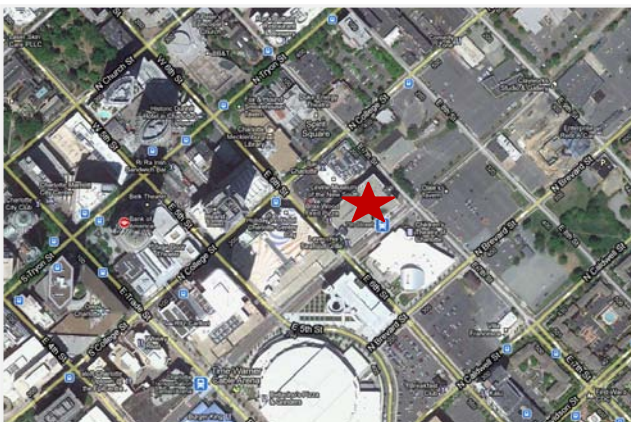
Pricing

Price is negotiable



Demographics

	1.0 mile	3.0 mile	5.0 mile
Population	11,975	90,192	213,079
Households	5,794	39,019	91,005
Average Household Income	\$65,972	\$69,393	\$66,678



For more information contact

Chris Vasbinder
Lincoln Harris
704.714.7662
chris.vasbinder@lincolnharris.com



A Promise of Value.

lincolnharris.com